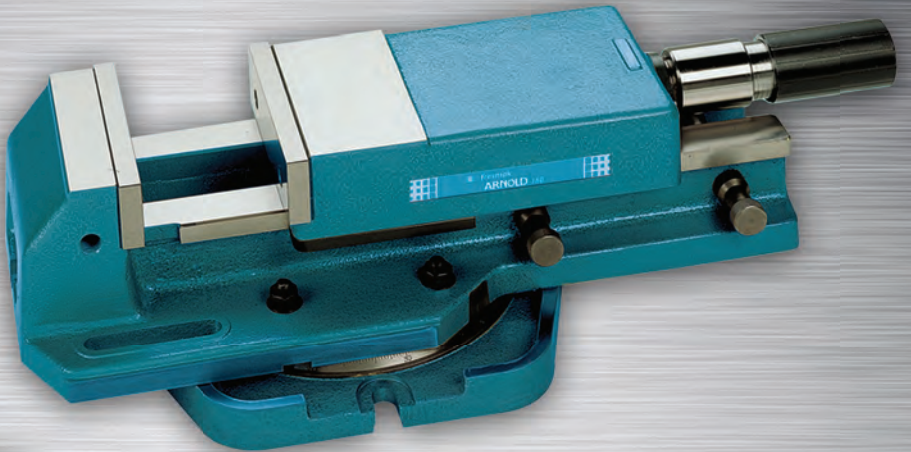
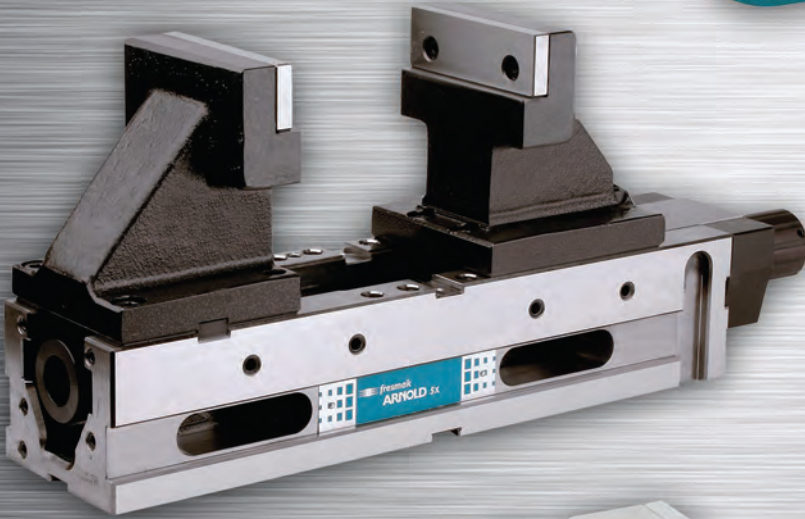


Arnold High-Pressure Vises

**For Milling, Grinding and Other
Production Workholding Applications**



*Dapra now offers a full line of
vises that provide controllable
power and dependable
clamping for a wide variety of
workholding applications.*



DAPRA[®]
WORKHOLDING

Arnold Workholding Family

High-Pressure Vises for a Variety of Applications

View full specifications at: Dapra.com/arnold

Arnold Classic - HydraVise

- Up to 18,000 lbs. pressure in four vise sizes: 3.5", 5.0", 6.5" and 8" jaw widths
- Hydraulic and mechanical spindles available
- Normal and narrow vise bases (for close mounting)



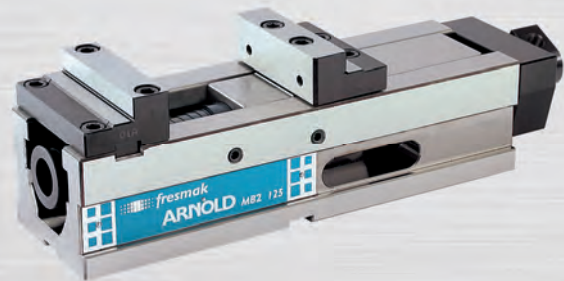
Arnold MAT

- Fully ground periphery guarantees parallelism & perpendicularity for side and end-mounting
- High-pressure pull-down clamping provides ultimate security and accuracy
- Built-in rear jaw for strength and stability
- Hydraulic and mechanical versions with up to 11,000 lbs. pressure in 3.5", 5.0", 6.5" and 8" jaw widths



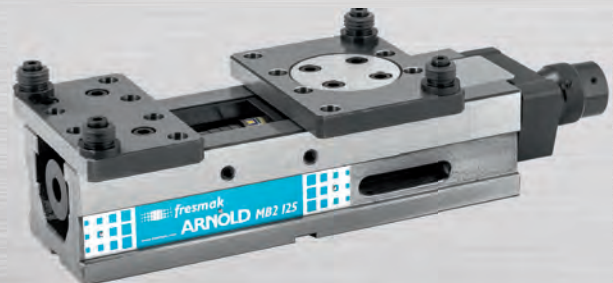
Arnold MB2

- Top and bottom ground version of MAT vise - economy model
- Interchangeable front and rear jaws for optimum versatility
- Hydraulic and mechanical versions with up to 11,000 lbs. pressure in 5.0" and 6.5" jaw widths



Arnold Durmak

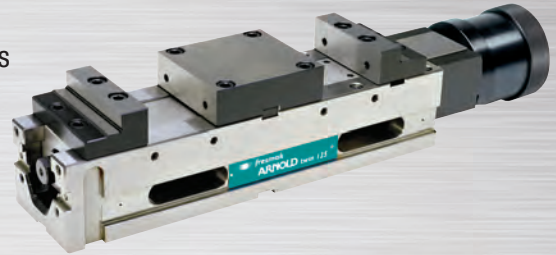
- MB2 clamping capacity with wider range of clamping variability
- One fixed and one moving jaw, flat for adding clamping fixtures/grippers
- Mechanical intensifier provides up to 11,000 lbs. pressure in 5" and 6.5" jaw widths



Arnold vises, manufactured by world-leader Fresmak and represented in the USA by **HAPRA**, offer high-pressure workholding solutions that are suitable for milling, grinding, drilling, toolroom and production work. All Arnold vises are manufactured to precision tolerances and accurate standards to ensure reliability and long life.

Arnold Twin

- High-pressure clamping of two workpieces simultaneously
- 3rd-hand feature allows clamping of each piece in two stages
- Fully-ground periphery guarantees parallelism and perpendicularity for side and end-mounting
- Hydraulic intensifier provides up to 11,000 lbs. pressure in 3.5" and 5.0" jaw widths



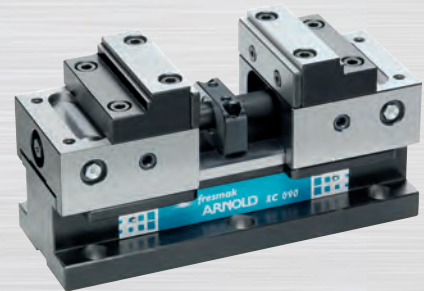
Arnold 5X

- Tall jaws for 5-axis machining
- Mechanical intensifier provides up to 6,600 lbs. clamping pressure
- 5.0" jaw width on two different length vise bodies (medium and long)
- Large opening accepts workpieces up to 9.5" long



Arnold SC

- Self-centering vise - equipped with a mechanical spindle without high pressure
- High-mount screw maximizes clamping force and minimizes jaw deflection
- Centering accuracy of .0007"
- Small footprint suitable for 5X machining in jaw widths of 2.75", 3.5" and 5.0"



Arnold SC 5X

- Self-centering vise - equipped with a mechanical spindle without high pressure
- Tall jaws for optimum 5X access
- Centering accuracy of .0007"
- Small footprint suitable for 5X machining in jaw widths of 3.5" and 5.0"



DAPRA[®]
CORPORATION

*Contact your local Dapra
distributor, or call us directly:*

1-800-243-3344

66 Granby Street, Bloomfield, CT 06002
800-243-3344 • 860-242-8539 • Fax 860-242-3017
Email: info@dapra.com • www.dapra.com