

ALLMATIC basic – SIMPLE AND RELIABLE!

This motto fits the ALLMATIC basic to perfection. Because our "small" model offers big advantages.



ALLMATIC basic – MECHANICAL

Scope of application:

- Conventional and CNC-controlled milling machines – for efficient, precision machining
- Horizontal installation – great variability and flexibility

Product features:

- Excellent ease of operation guarantees optimal handling for every application
- Fast adjustment for clamping range presetting
- Operation with the ring wrench supplied
- Reproducible clamping forces are achieved using a torque wrench
- Integrated scrapers ensure functional reliability and minimise cleaning
- Fixing on the machine table by means of mounting holes in the vice base. Additional holes can be made in the soft middle section of the vice base
- Optional centre jaw allows two or more workpieces to be clamped



M8 thread for workpiece stop

M10 thread for mounting HD jaws

Hardened, ground and polished guideway

An overview of the clamping jaws and other accessories is given on the following pages.

Robust base made of case-hardened steel

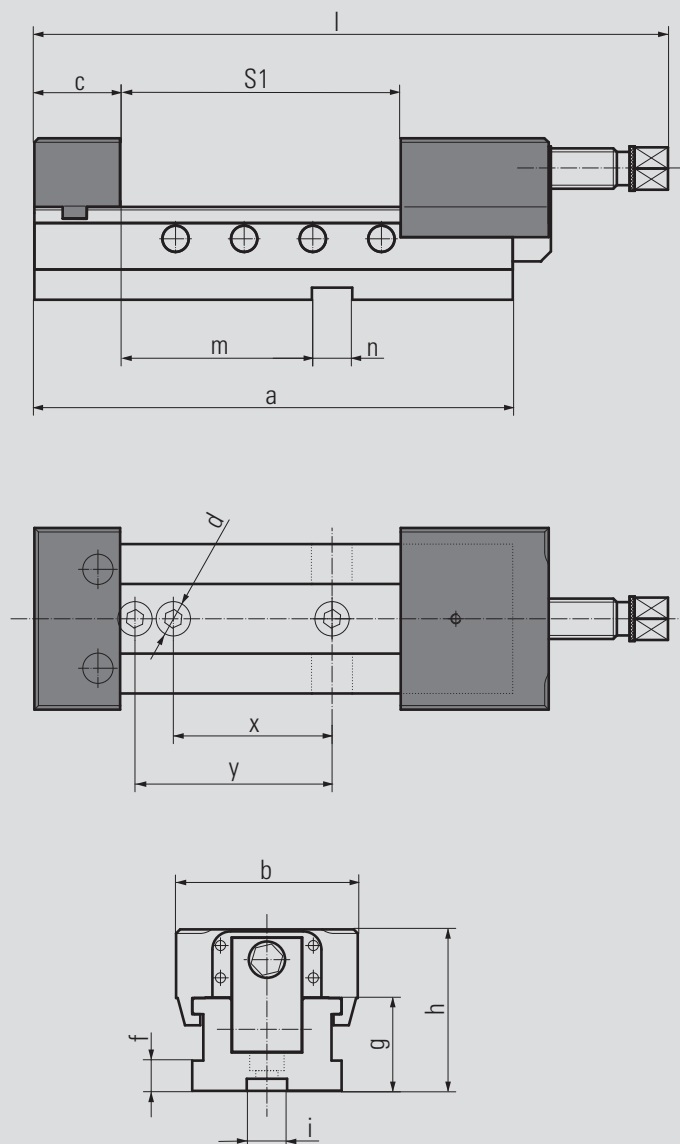
Precision aligning slots and mounting holes in the ground and polished bottom surface

Ground and polished undergrip

Scope of supply:

- 1 basic vice with clamping jaws
- 1 pair of Click parallels
- 1 socket screw wrench
- 1 ring wrench
- M12 fastening bolts

Order no. jaw width 125: 692118800055
160: 692120800055



Technical data

Jaw width		125	160
Dimensions / tolerances in mm	a	310	405
	b	124	160
	c	50	66
	d	13	13
	f	15	15
	g	48	56
	h	87.5	105.5
	i	20	20
	l max	426	483
	m	120	128
	n	20	20
	x	100	100
	y	125	125

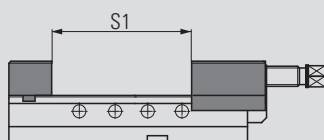
Jaw width	125	160
Clamping range S1 in mm	0 – 208	0 – 283
Torque in Nm	85	120
Max. clamping force in kN	35	50
Weight in kg	16	26

ALLMATIC basic – mechanical (accessories)

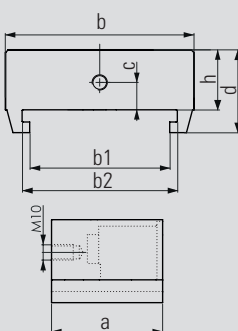
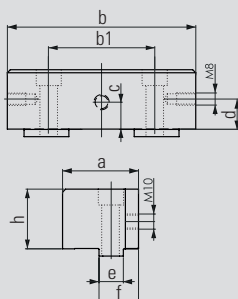
Top jaws



- Material: hardened steel
- High side of jaw hardened
- Ground clamping surfaces
- Additional thread on the step side for mounting HD jaws



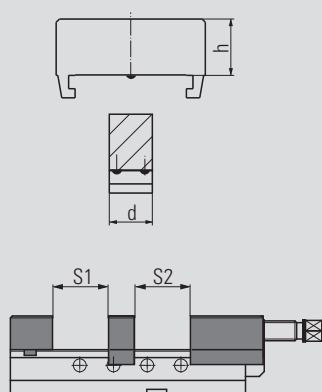
Jaw width	125	160
Clamping range S1	0 – 208	0 – 283



Jaw width			
fixed	125	160	
Ord. no.:	6921184005031	6921204005031	
In mm	a	50	66
	b	124	160
	b1	70	80
	c	18	20
	d	20	20
	e	16	18
	f	26	46
	h	39,5	49,5

Jaw width			
movable	125	160	
Ord. no.:	6921181002031	6921201002031	
In mm	a	73	73
	b	124	160
	b1	92	116
	b2	102	126
	c	18	20
	d	54,5	66,5
	h	39,5	49,5

Intermediate jaw



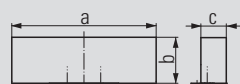
Order no. jaw width 125: 6921185024040
160: 6921205024040

Jaw width	125	160	
Dimensions in mm	h	39.5	49.5
	d	33	41

Clamping range S1	0 – 87	0 – 121
Clamping range S2	0 – 87	0 – 121

- Material: hardened steel
- For clamping more than one part
- Installation between fixed and movable jaws of the vice
- Mount for Click system on both sides of the jaw

Soft jaw



Order no. jaw width 125: 6921684023042

Jaw width	125	
Dimensions in mm	a	125
	b	39.8
	c	22

- Material: case-hardened steel 21MnCr5G, mat. no.: 1.2162
- Jaws can be case-hardened
- For production of special jaws by the customer
- Only for use with jaws with Click system

ALLMATIC basic – mechanical (accessories)

Jaw with cross grooving

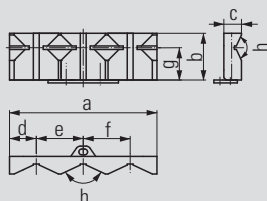


Order no. jaw width 125: 6921684032040

Jaw width	125	
Dimensions in mm	a	125.6
	b	40.1
	c	12

- Material: hardened steel
- Jaws with sharp serrations to increase the specific contact pressure per unit area
- Visual impressions on workpiece
- Only suitable for soft materials
- Only for use with jaws with Click system

Prismatic jaws (pair)

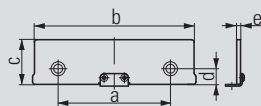


Order no. jaw width 125: 6921684024042

Jaw width	125	
Dimensions in mm	a	125.6
	b	39.8
	c	15
	d	22.8
	e	40
	f	40
	g	27.5
	h	130°

- Material: hardened steel
- Jaws for clamping round parts, vertical dia. 16 – 74 mm, horizontal dia. 12 – 40 mm
- Only for use with jaws with Click system

Click parallels (pair)



Order no. jaw width 125: 6921185035042

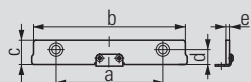
160: 6921205044042

Jaw width	125	160
Dimensions in mm	a	88
	b	125
	c -0.01	35
	d	12.25
	e	3

- For parallel raising of workpieces
- Hardened, ground and polished parallels
- Parallels with Click system

ALLMATIC basic – mechanical (accessories)

Click parallels (pair)



Order no. jaw width 125: 6921185020042
160: 6921205025042

Jaw width		125	160
Dimensions in mm	a	88	88
	b	125	160
	c -0.01	20	25
	d	12.25	12.25
	e	3	3

- For parallel raising of workpieces
- Hardened, ground and polished parallels
- Parallels with Click system

Smooth jaws (pair)



Order no. jaw width 125: 6921024022031
160: 6921034022031

Jaw width		125	160
Dimensions in mm	a	125	160
	b	40	50
	c	15	20

- Material: hardened steel
- For parts with delicate clamping surfaces
- Please order fastening bolts separately (order no. 6921011023000)

Serrated jaws (pair)



Order no. jaw width 125: 6921021005031
160: 6921031005031

Jaw width		125	160
Dimensions in mm	a	125	160
	b	40	50
	c	15	20

- Material: hardened steel
- Standard jaws with serration
- To increase the specific contact pressure per unit area
- Please order fastening bolts separately (order no. 6921011023000)

Soft basic jaws (pair)



Order no. jaw width 125: 6921024023031
160: 6921034023031

Jaw width		125	160
Dimensions in mm	a	125	160
	b	40	50
	c	25	30

- Material: 21MnCr5G, mat. no.: 1.2162
- Jaws can be case-hardened
- For production of special jaws by the customer
- Please order fastening bolts separately (order no. 6921011023000)