

**DAPRA**<sup>®</sup> 66 Granby Street  
**CORPORATION** Bloomfield, CT 06002

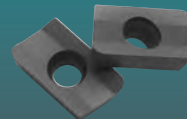


**Limited-Time Offer:**  
*Big Savings from  
Dapra on Square  
Shoulder Cutters*

**DETAILS INSIDE!**



**Save on Square  
Shoulder Cutters  
for a limited time!**



**FREE or 50% off cutters  
available now from DAPRA!**

*Special Offer Ends January 31, 2012 – See Inside for Details*

**Save 20-40%...**

***In addition to this special promotion,  
the everyday prices of our high-performance inserts  
will always save you 20-40%  
when compared to our competitors' pricing.***

**Contact your local distributor today to find out how  
Dapra's high-performance inserts will save you time and money.**

***Visit [www.dapra.com](http://www.dapra.com) for available grades and dimensions.***

# Special deals on all Square Shoulder tools!

Visit [www.dapra.com](http://www.dapra.com) for video demonstrations, features and dimensions.

## Standard Steel End Mills, Chamfer Mills & Modular Heads (SSEM, SSER, CMEM & MOD)

**20** Buy 20 inserts and a cutter receive a **FREE** cutter of equal or lesser value

OR

Buy 20 inserts get a cutter at 1/2 price



## Shell Mills, Carbide Core End Mills & Helical Roughing End Mills (SSSM, SSPM, CC, BCSM & HREM)

**40** Buy 40 inserts and a cutter receive a **FREE** cutter of equal or lesser value

OR

Buy 40 inserts get a cutter at 1/2 price



## APET & XPET Insert Sizes and Available Grades

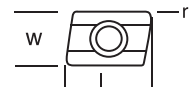
Visit [www.dapra.com](http://www.dapra.com) for information on insert grades.

Insert	l	w	r	Uncoated		Coated				
						DMP35	DMP353	DMP35-HP	DMP357	DMP35-GLH
				DMK30 †	DMK303 †	DMK30-HP †	DMK307 †	DMK30-GLH †		
				DMP30	DMP303	DMP30-HP	DMP307	DMP30-GLH		
				DMK25	DMK253	DMK25-HP	DMK257	DMK25-GLH		
				Pressed to Size						
<b>APET</b>	APET Inserts feature a high-strength cutting edge and are ideal for high-performance milling of most harder steels and cast irons.									
APET100308	.380"	.250"	.031"	●	●	●	●	●	●	●
APET100316	.380"	.250"	.062"	●	●	●	●	●	●	●
APET160408	.625"	.375"	.031"	●	●	●	●	●	●	●
APET160412	.625"	.375"	.047"	●	●	●	●	●	●	●
APET160416	.625"	.375"	.062"	●	●	●	●	●	●	●
APET160431*	.625"	.375"	.120"	●	●	●	●	●	●	●
<b>XPET</b>	XPET Inserts are ideal for high-performance milling of stainless steels and nonferrous materials such as copper alloys and aluminum. Also good for gummy, softer, free-machining steels.									
XPET100308	.380"	.250"	.031"	●	●	●	●	●	●	●
XPET100316	.380"	.250"	.062"	●	●	●	●	●	●	●
XPET160404	.625"	.375"	.015"	●	●	●	●	●	●	●
XPET160408	.625"	.375"	.031"	●	●	●	●	●	●	●
XPET160412	.625"	.375"	.047"	●	●	●	●	●	●	●
XPET160416	.625"	.375"	.062"	●	●	●	●	●	●	●
XPET160424	.625"	.375"	.094"		DMP35 ONLY		●**		●**	
XPET160431*	.625"	.375"	.120"	●	●	●	●	●	●	●

\* This insert is designed for heavy roughing and has a corner radius that actually measures closer to .115" than .125" (.010" difference) due to distortion by the positive radial insert angle.

\*\* Only available in DMP35 substrate (DMP35-HP and DMP35-GLH)

† Available for XPET only.



APET Cutting Edge (T-Land Edge) High Strength

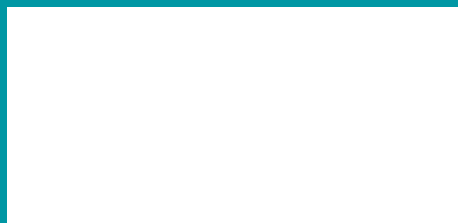


XPET Cutting Edge (Honed Edge) High Shear

### Terms and Conditions:

- Cutters must be for the inserts purchased.
- Cutter selection must be indicated at the time of the order.
- Offer only applies to SXEH, APET and XPET inserts, including XPET-ALU. Grades can be mixed and match^â to qualify for this discount.
- Cutters and inserts purchased through this promotion are not eligible for return. Previous purchases are excluded.
- Product must be drop shipped to end user only.
- Promotional orders cannot be used as replacement orders.
- **Offer ends January 31, 2012!**

### Your Dapra distributor is:



Contact your local Dapra distributor, or call us directly:

**DAPRA**<sup>®</sup>  
CORPORATION  
1-800-243-3344  
[www.dapra.com](http://www.dapra.com)