

**SPECIAL SAVINGS** ON THE

# TITAN-TC

FROM

**BAIPRA**<sup>®</sup>

Order number: 2375/125

*The TITAN-TC Kit consists of:*

- 1 Allmatic TITAN-TC High-Pressure Vise
- 1 Fixed Support Jaw
- 1 Movable Support Jaw
- 4 Universal Grippers
- 4 Round Gripper Studs
- 4 Pointed Gripper Studs
- 4 Smooth Gripper Studs
- Accessory Carrying Case

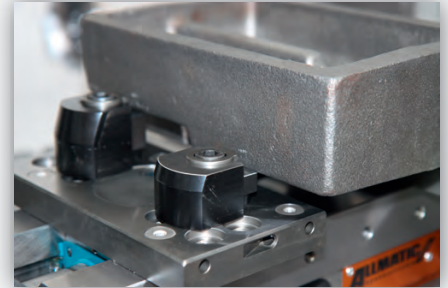
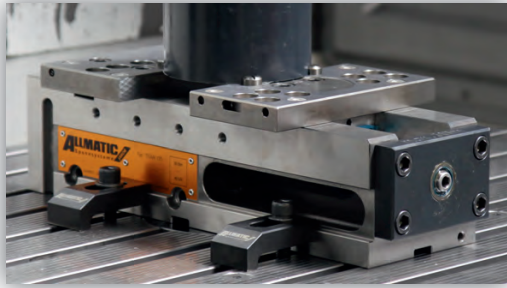
USB-Stick (4 GB) with Technical Info,  
Application Examples and Demo Videos



**\$4,995**

**ALLMATIC**  
Spansysteme **JAKOB**

The ALLMATIC TITAN high-pressure vise has all of the precision and versatility required of today's workholding tools. It has a robust GGG 60 base with hardened and ground guideways to provide a high level of accuracy and excellent wear resistance. The large side openings allow chips and cooling lubricant to escape. Threaded holes on both sides allow for the attachment of workpiece stops, and precise aligning slots in the base ensure smooth handling. The TITAN also features quick set-up times, without an external power supply, and the capability to change workpieces in a matter of seconds.



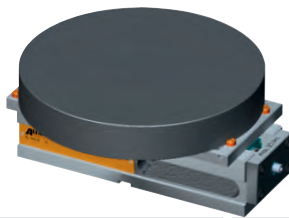
### TITAN-TC Features:

- Ground and polished on all sides
- Support jaws securely and economically clamp a wide range of unmachined parts
- Max clamping pressure: 40 kN or 8,800 lbs.
- Fully enclosed high-pressure spindle
- Mechanical power intensifier for unmachined parts clamping
- Robust base made of GGG 60
- Large lateral outlets allow chips and coolant to exit
- Suitable for material with a strength of up to approx. 1000 N/mm<sup>2</sup>
- Wide range of available jaw options

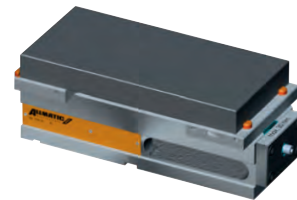


## Clamping widths - TITAN-TC

### Support jaws with gripper studs

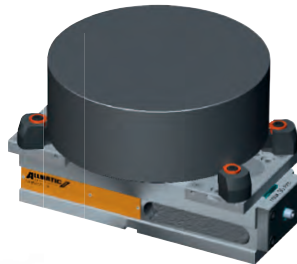


max. clamping range    Ø 380 mm



max. clamping range    365 mm  
max. clamping width    at least 160 mm or larger

### Support jaws with universal gripper set



max. clamping range    Ø 330 mm



max. clamping range    300 mm  
max. clamping width    at least 165 mm or larger

### Terms and Conditions:

- Items purchased under this special are not eligible for return or exchange.
- Promotion ends December 31, 2011.

**DAPRA**  
**CORPORATION**  
[www.dapra.com](http://www.dapra.com)

### DAPRA Corporation

1-800-243-3344 | [info@dapra.com](mailto:info@dapra.com)  
66 Granby Street, Bloomfield, CT 06002  
Phone: 860-242-8539 | Fax: 860-242-3017  
© 2011 Dapra Corporation