

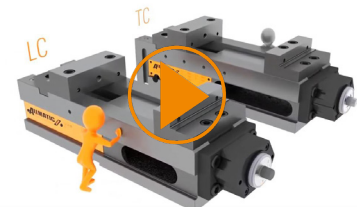
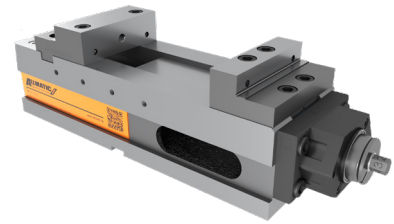
# NC8

## Range of application:

- Ideal for use on 3-axis and 4-axis machining centres
- For conventional clamping

## Product features:

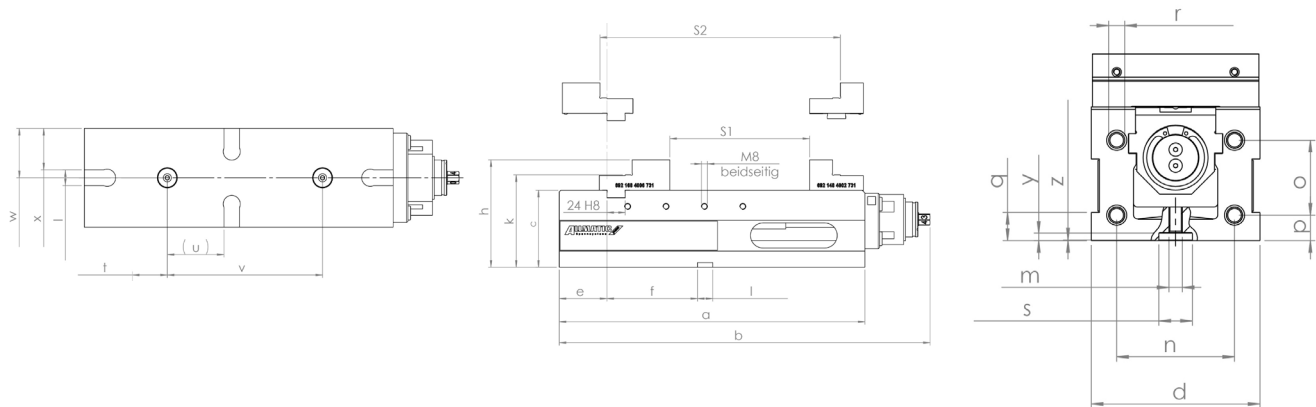
- Tool-less force setting
- Constant, reproducible clamping force with mechanical power-assist
- Proven maintenance-free and encapsulated high-pressure spindle, thus minimised cleaning requirements
- Basic body made of GJS-60
- Guideway inductively hardened and ground
- Aligning grooves in the base face
- Standard with locating holes  $\varnothing 25H6 M10$  for zero-point clamping systems; inside micrometre  $200\text{mm} \pm 0.01\text{mm}$  (NC8 90 & NC8 125M)
- Lateral boreholes for extension (NC8 125M/125L/160/200)
- Evenness of basic body  $0.01\text{mm}$
- Height of basic body ground  $-0.02\text{ mm}$
- Width of base body ground  $-0.05\text{ mm}$ , therefore can be used laterally
- Quick-change system for add-on jaws and parallels
- Reversible jaws: for min. / max. chuck capacities with one pair of jaws
- Fixed jaw, simple programming thanks to constant zero
- Closing and opening of the complete clamping range including clamping process with a hand crank
- The total length is independent of the workpiece size
- Dimensions NC8 as for LC/TC
- Jaw interface compatible with LC/TC
- Threads per side for lateral workpiece stops M8
- Connection thread for angle drive



The NC8 family is also available in hydraulic versions!



# TECHNICAL INFORMATION



NC8 / Size		90	125 M	125 L	160	200	200 Heavy Duty
Art.No.		6921908000055	6921918000055	6921918010055	6921928000055	6921928010055	6921938000055
Raw part machining							
Pre-machined part		x	x	x	x	x	x
Clamping range max.	mm	217	313	445	435	435	435
Clamping range S1 min.	mm	0 - 126	0 - 182	0 - 314	0 - 246	0 - 246	0 - 246
Clamping range S2 min.	mm	91 - 217	131 - 313	87 - 445	189 - 435	189 - 435	189 - 435
Clamping force max.	kN	28	40	40	60	60	60
Tool-less force setting		11	4	4	4	4	4
Weight	kg	15	35	43	56	60	85
a	mm	283	389	530	530	530	530
b	mm	339	483	615	615	615	615
c	mm	80	100	100	115	115	140
d	mm	90	126	126	164	164	202
e	mm	39	62	62	70	70	70
f	mm	73	118	216	164	164	164
g	mm	20	24	24	30	30	30
h	mm	114	139,5	139,5	164,8	175	200
k	mm	96	120	120	140	140	165
l	mm	20	20	20	20	20	20
m	mm	M10	M10				
n	mm		88	88	128	128	
o	mm		56	56	67	67	
p	mm		19	19	17	17	
q	mm	15	21	21	21	21	21
r	mm		M12	M12	M12	M12	M12
s	mm	∅ 25	∅ 25				
t	mm		45				
u	mm	70,5	73				
v	mm	200	200				
w	mm	45	63	63	72	72	91
x	mm	53	53	53			
y	mm	5,5	5,5				
z	mm		0,5 x 45°				

## Suitable accessories

		90	125 M	125 L	160	200	200 Heavy Duty
Side clamps	Art.No.	6921015000231	6921025000031		6921025000031		6921025000031
DUO side clamps	Art.No.		6921285000031		6921285000031		6921285000031
Hand crank	Art.No.	6921685508031	6921685508031		6921685508031		6921685508031
Angular drive	Art.No.	6921905700043	6921685700543		6921685700543		6921685700543
Clamping range enlargement	Art.No.		6921685008055		6921705008055		
Console	Art.No.		6921885010042				
Workpiece stop	Art.No.				6921285650144		
Workpiece stop	Art.No.				6921685670042		